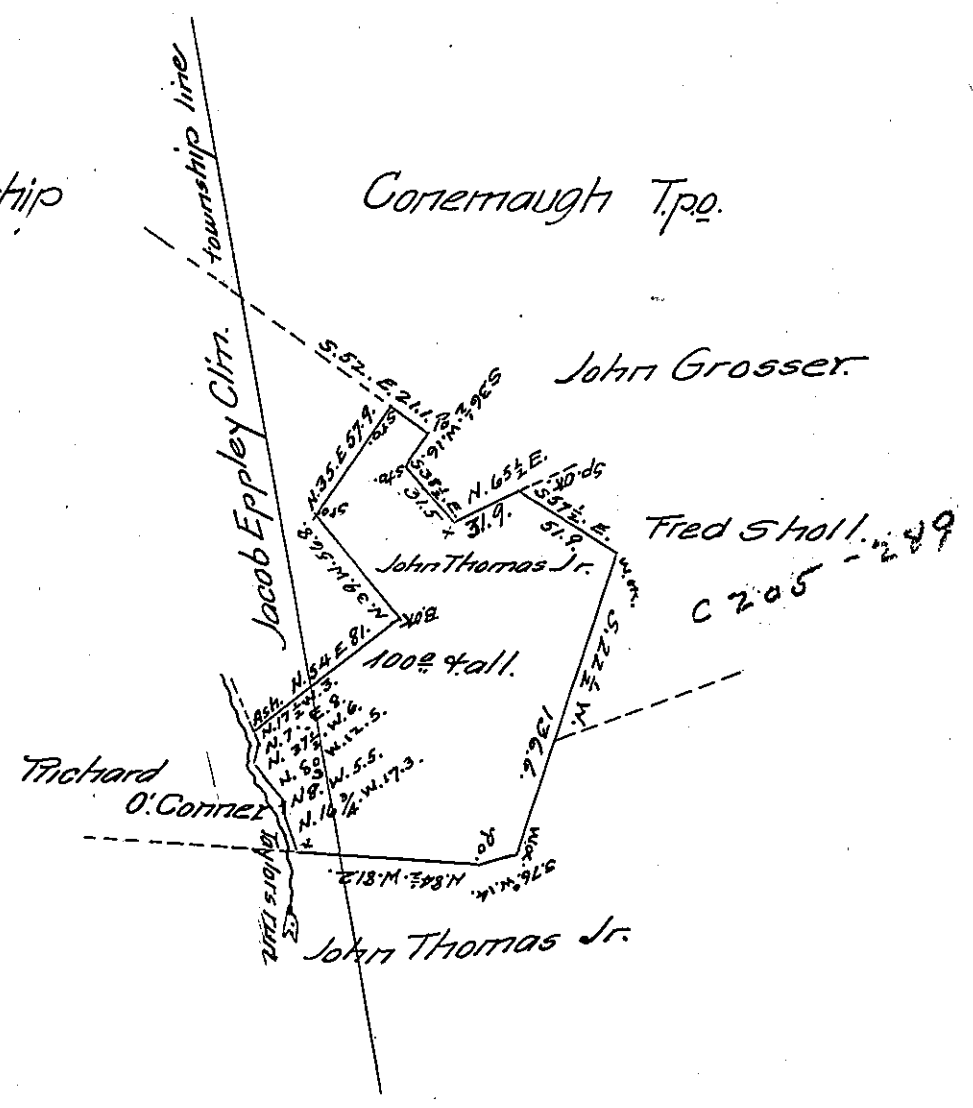


FORM No. 1.

Jenner Township

Conemaugh Tpo.



Draught of a tract of land. Situate in Conemaugh & Jenner townships in the County of Somerset. Containing 100 acres and allowance of land improved, Surveyed the 28 day of May 1868. In pursuance of a Warrant dated the 17 day of January 1868. Granted to John Thomas Jr. for 100[±] of land improved

F. Meppner C.S.

To J.M. Campbell Esq.
Surveyor General

IN TESTIMONY that the above is a copy of the original remaining on file in the Department of Internal Affairs of Pennsylvania, made conformably to an Act of Assembly approved the 16th day of February 1833, I have hereunto set my hand and caused the Seal of said Department to be affixed at Harrisburg, this thirtieth day of April 1907.

Francis J. Down
Secretary of Internal Affairs.